

# ONTRACK EDUCATION



LEAD ART TEACHER  
SILVERSTONE

# ON TRACK EDUCATION SERVICES



---

ON TRACK EDUCATION SERVICES LIMITED WAS ESTABLISHED BY A TEAM OF SEN TEACHERS IN 2004. WE NOW HAVE EIGHT INDEPENDENT SPECIAL SCHOOLS, AND ADDITIONAL SUPPORT SERVICES, AROUND THE COUNTRY FOR YOUNG PEOPLE WITH A RANGE OF DIVERSE SPECIAL EDUCATIONAL NEEDS.

## ON TRACK SILVERSTONE

Our Silverstone school is an independent special school with places for up to 40 pupils aged 11 to 16 with a range of social, emotional and mental health difficulties. Our pupils often have histories of educational difficulties, poor attendance and/or exclusion from mainstream education. Many have special educational needs including behavioural, emotional, mental health and social difficulties and histories of challenging behaviour. Some have additional difficulties and specific learning difficulties including dyslexia, social communication difficulties, attention deficit hyperactivity disorder and autism.

We support our pupils to fulfil their potential by giving them unconditional support, providing them with good quality teaching and empowering them to effectively manage their own behaviour.



Our staff team work together to build and maintain positive professional relationships with all pupils, treating each pupil with tolerance and respect. We strive to provide our pupils with a sense of success and positive achievement, approached by giving every pupil unconditional support, underpinned by THRIVE principles.

Our new school site opened in Silverstone in September 2019. The school, moved from its old site in Silsoe, was judged to be 'Good' by Ofsted in 2024. This new school site has been inspected and approved by Ofsted in and offers excellent facilities to deliver academic, creative, vocational and outdoor learning opportunities.

# RECRUITMENT AND SELECTION STATEMENT

---

The safe recruitment of staff is the first step in the effective safeguarding and promoting the welfare of our pupils. On Track Education is committed to safeguarding and promoting the welfare of children and young people and expects all staff and volunteers to share this commitment. It is recognised that this can only be achieved through sound procedures, good inter-agency co-operation and the recruitment and retention of competent, motivated employees who are suited to, and fulfilled in the roles they undertake.

On Track Education recognises the value of, and seeks to achieve a diverse workforce which includes people from different backgrounds, with different skills and abilities. On Track Education is committed to ensuring that the recruitment and selection process is conducted in a manner that is systematic, efficient, effective and promotes equality of opportunity. Selection will be on the basis of merit and ability, assessed against the qualifications, skills and competencies required to do the job. On Track Education will uphold its obligations under law to not discriminate against applicants.

On Track Education will implement robust recruitment procedures and checks for appointing staff and volunteers to ensure that reasonable steps are taken not to appoint a person who is unsuitable to work with children, or who is disqualified from working with children, or does not have the suitable skills and experience for the intended role.

The following pre-employment checks will be required:

- receipt of at least two satisfactory references, one from most recent employer\*
- verification of the candidate's identity
- a satisfactory enhanced DBS check (including barred list information)
- verification of the candidate's mental and physical fitness for the post
- verification of qualifications
- verification of professional status where required e.g. QTS status (unless properly exempted)
- the production of evidence of the right to work in the UK
- a check for a teacher prohibition order
- a check for a section 128 direction (for management positions)
- online searches may be conducted on shortlisted candidates to help identify any issues that are publicly available

NB It is illegal for anyone who is barred from working with children to apply for, or work in our schools in any voluntary or paid capacity.

- On Track Education will contact current and previous employers, if an applicant is shortlisted, as part of pre-appointment checks. In exceptional circumstances, where you have good reason not to want your referees to be contacted prior to interview, you should set out your reasons with your application form. On Track Education will liaise with you and where they agree to defer in such cases, referees will be contacted immediately after interview and before an offer of employment is made.
- Further checks may be made for applicants who have lived or worked outside the UK. These will include a check for information about any sanction or restriction that an EEA professional body has imposed.

# RECRUITMENT AND SELECTION STATEMENT

---

On Track Education will take up any discrepancies or anomalies in the information provided or issues arising from references at interview.

On Track Education will contact current and previous employers of those applicants.

On Track Education will keep and maintain a single central record of recruitment and vetting checks, in line with the statutory requirements.

On Track Education requires all staff and volunteers who are convicted or cautioned for any offence during their employment to notify the school, in writing of the offence and penalty.

All posts within On Track Education are exempt from the Rehabilitation of Offenders Act 1974 and therefore all applicants will be required to declare spent and unspent convictions, cautions and bind-overs, including those regarded as spent and have an Enhanced Criminal Records Disclosure. A previously issued Criminal Records Disclosure Certificate will only be accepted in certain restricted circumstances. On Track Education is committed to ensuring that people who have been convicted are treated fairly and given every opportunity to establish their suitability for positions. Having a criminal record will not necessarily be a bar to obtaining a position. This will depend on the background, nature and circumstances of the offence(s).



# EQUALITY, INCLUSION AND DIVERSITY

ON TRACK EDUCATION IS COMMITTED  
TO THE PRINCIPLE OF EQUAL  
OPPORTUNITY IN EMPLOYMENT

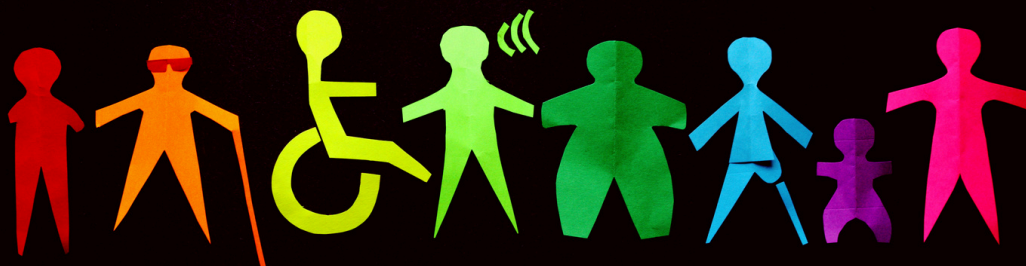
---

On Track Education is committed to the principle of equal opportunity in employment. The terms equality, inclusion and diversity are at the heart of this policy. 'Equality' means ensuring everyone has the same opportunities to fulfil their potential free from discrimination. 'Inclusion' means ensuring everyone feels comfortable to be themselves at work and feels the worth of their contribution. 'Diversity' means the celebration of individual differences amongst the workforce. We will actively support diversity and inclusion and ensure that all our employees are valued and treated with dignity and respect. We want to encourage everyone in our business to reach their potential.

We value people as individuals with diverse opinions, cultures, lifestyles and circumstances. All job applicants, employees and workers (including agency workers) are covered by this policy and it applies to all areas of employment including recruitment, selection, training, career development, and promotion. These areas are monitored and policies and practices are amended if necessary to ensure that no unfair or unlawful discrimination, intentional, unintentional, direct or indirect, overt or latent exists.

Equality of opportunity, valuing diversity and compliance with the law is to the benefit of all individuals in our Company as it seeks to develop the skills and abilities of its people. While specific responsibility for eliminating discrimination and providing equality of opportunity lies with managers and supervisors, individuals at all levels have a responsibility to treat others with dignity and respect. The personal commitment of every employee to this policy and application of its principles are essential to eliminate discrimination and provide equality throughout the Company.

Management will ensure that recruitment, selection, training, development and promotion procedures result in no job applicant, employee, or worker receiving less favourable treatment because of a protected characteristic within the Equality Act 2010 which are race (including colour, nationality, ethnic or national origin and caste), religion or belief, disability, sex, sexual orientation, pregnancy or maternity, gender reassignment, marriage/civil partnership and age. In accordance with our overarching equal treatment ethos, we will also ensure that no-one is treated less favourably on account of their trade union membership or non-membership, or on the basis of being a part-time worker or fixed term employee. The Company's objective is to ensure that individuals are selected, promoted, and otherwise treated solely on the basis of their relevant aptitudes, skills and abilities.



# LEAD ART TEACHER

<b>Responsible to:</b>	Mandy Hayward-Flint , Head Teacher
<b>Location:</b>	On Track Education Silverstone
<b>Salary:</b>	£29,775 to £35,585 per annum, dependent on qualifications and experience
<b>Contract type:</b>	Full-time: 8 hours per day Monday to Friday, between 8:15 am and 4:15 pm



## SAFEGUARDING

All On Track staff are expected to maintain an awareness of equality and diversity in relation to pupils, staff and visitors to On Track.

On Track places safeguarding and wellbeing at the heart of all that it does and all staff are expected to:

- adhere to the Staff Code of Conduct policy at all times
- read and ensure their full understanding of all school policies
- be mindful of safeguarding and child protection issues in relation to all pupils
- report any concerns using the appropriate documentation
- engage positively in all training opportunities



## CORE REQUIREMENTS

In fulfilling the requirements of the post, the teacher will demonstrate essential professional characteristics, and in particular will:

- inspire confidence in pupils and colleagues
  - participate actively in team building with colleagues
  - engage and motivate pupils
  - have lead responsibility for (subject) across the settings and develop plans which identify clear targets for progression
  - improve the quality of pupils' learning
  - contribute to the development and implementation of the school's policies and procedures
  - participate in the training opportunities offered
  - effectively manage pupil behaviour
  - promote and safeguard the welfare of the pupils
-



## JOB PURPOSE

- To lead the teaching and support team to implement an effective and individualised Art curriculum in order to address pupils' needs, their interests, their capabilities and to enable them to enjoy and achieve.
  - To have lead responsibility for ongoing development of the Art curriculum and a variety of accreditation, developing plans which identify clear targets and success criteria for its development. To deliver the Art curriculum to specific pupils.
- 



## JOB DESCRIPTION

### **Planning, Teaching and Class Management**

Teach allocated pupils by planning their programmes to achieve progression of learning through:

- Identifying clear teaching objectives and specifying how they will be taught and assessed
- Preparing pupils for accreditation appropriate to their stage of learning, but always seeking to maximize their potential
- Develop curriculum which ensure high levels of interest
- Setting appropriate expectations
- Setting clear targets, building on prior attainment
- Identifying and meeting Special Educational Needs
- Effectively interpreting and implementing EHC Plans
- Providing clear structures for lessons maintaining pace, motivation and challenge
- Making effective use of assessment and ensure coverage of programmes of study
- Ensuring effective teaching and best use of available time
- Applying effective classroom management
- Managing pupil behaviour in line with the school's policies and procedures, including using a range of reward strategies
- Using a variety of teaching methods to cater for a range of learning styles and demonstrating differentiation in all activities
- Ensuring pupils acquire and consolidate knowledge, skills and understanding appropriate to the subject taught
- Evaluating own teaching critically to improve effectiveness
- Ensuring the effective and efficient deployment of learning support.

### **Monitoring, Assessment, Recording, Reporting**

- Assess how well learning objectives have been achieved and use them to improve specific aspects of teaching
- Mark and monitor pupils' work and set targets for progress
- Assess and record pupils' progress systematically and keep records to check work is understood and completed, monitor strengths and weaknesses, inform planning and recognise the level at which the pupil is achieving
- Keep records of short, medium and long term subject plans according to the school's guidelines and procedures
- Undertake assessment of pupils as required
- Prepare and present informative reports as required

### **Pastoral Duties**

- Promote the general progress and well-being of all pupils
  - Liaise with the Head Teacher to ensure the implementation of the school's pastoral procedures and policies
  - Prepare and maintain risk assessments, behaviour support plans, records of achievement, files and folders for keywork pupils
  - Contribute to the preparation of risk assessments, behaviour support plans, files, folders and reports for all pupils
  - Alert appropriate staff to problems experienced by pupils and make recommendations as to how these may be resolved
-

- 
- Communicate, as appropriate, with parents of pupils and persons or other agencies outside the school concerned with the welfare of individual pupils, after consultation with appropriate staff
  - Take responsibility for promoting and safeguarding the welfare of all pupils

#### **Other Professional Requirements**

- Have a working knowledge of teachers' professional duties and legal liabilities
  - Operate at all times within the stated policies and procedures of the school
  - Establish effective working relationships and set a good example through personal presentation and professional conduct
  - Act positively to foster good relationships with the rest of the staff team
  - Endeavour to give every pupil the opportunity to reach their potential and achieve high expectations
  - Co-operate with other staff to ensure sharing and effective use of resources to the benefit of the school and pupils
  - Contribute to the corporate life of the school through effective participation in meetings and management systems
  - Take responsibility for own professional development and duties in relation to school policies and practices
  - Maintain confidentiality relating to the pupils, staff and business of On Track
-



This job description reflects the major tasks to be carried out by the post holder and identifies a level of responsibility at which they will be required to work. In the interests of effective working, the major tasks may be reviewed from time to time to reflect changing needs and circumstances. Such reviews and any consequential changes will be carried out in consultation with the post holder.

Whilst every effort has been made to explain the main duties and responsibilities of the post, each individual task undertaken may not be identified. Employees will be expected to comply with any reasonable request from the managers to undertake work of a similar level that is not specified in this job description.

Your normal hours of work may be varied to meet the needs of the service with which you are based. You may be required to work hours in addition to your contracted hours.

On Track Education Services is committed to safeguarding the welfare of children and young people in their care and expects all staff, contractors and volunteers to share this commitment. We follow safer recruitment practice and appointments are subject to satisfactory enhanced DBS certification and reference.

---

# PERSON SPECIFICATION

EDUCATION	ESSENTIAL CRITERIA	DESIRABLE CRITERIA
	<ul style="list-style-type: none"> <li>Recognised teaching qualification</li> <li>GCSE English and Maths grade 4 or equivalent</li> </ul>	<ul style="list-style-type: none"> <li>Qualified Teacher status (Pre or Post 16)</li> <li>A degree or equivalent.</li> <li>Higher degree qualification, postgraduate courses.</li> </ul>
EXPERIENCE		
	<ul style="list-style-type: none"> <li>Evidence of successful and recent teaching responsibility of Art</li> <li>Understanding of Special Education</li> </ul>	<ul style="list-style-type: none"> <li>Evidence of successful and recent class/group teaching responsibility to GCSE or equivalent vocational level</li> <li>Evidence of substantial teaching experience</li> <li>Experience and understanding of Special Education</li> </ul>
KNOWLEDGE & UNDERSTANDING		
	<ul style="list-style-type: none"> <li>Knowledge of relevant Education Legislation.</li> <li>Knowledge and understanding of Ofsted inspection requirements and compliance with DfE regulations and standards.</li> <li>Ability to prepare and deliver appropriate curriculum using a range of teaching styles and methodologies</li> <li>Knowledge and understanding of continuous assessment and how to use this to improve teaching and learning</li> <li>Knowledge and understanding of national accreditation and exam board procedures</li> <li>Awareness of strategies to effectively manage the behaviour of the most vulnerable and needy children and young people.</li> <li>Understanding of how to set and monitor behavioural targets.</li> <li>Knowledge and understanding of the SEN Code of Practice and its implementation</li> </ul>	<ul style="list-style-type: none"> <li>Knowledge of independent school standards</li> </ul>
PERSONAL QUALITIES		
	<ul style="list-style-type: none"> <li>Able to establish and develop good relationships with all involved in the school.</li> <li>Ability to communicate effectively in writing and orally.</li> <li>Competent in the use of ICT.</li> <li>Flexible and approachable.</li> <li>Resilient under pressure.</li> <li>Ability to maintain a good sense of humour</li> <li>High levels of tolerance.</li> <li>Professionalism.</li> <li>Integrity.</li> <li>Trustworthy and dependable.</li> </ul>	
ATTITUDES		
	<ul style="list-style-type: none"> <li>A commitment to the vision and values espoused by On Track Education.</li> <li>A commitment to having a positive attitude at work</li> <li>A desire to meet each child's individual educational needs.</li> <li>A belief in the intrinsic value of all pupils</li> <li>A commitment to providing unconditional support and approval to all pupils</li> <li>Commitment to own continuous professional development</li> <li>Commitment to safeguarding and promoting the welfare of children and young people.</li> <li>Commitment to equality of opportunity.</li> <li>Commitment to race and gender equality and social inclusion.</li> </ul>	



# SCAN HERE TO APPLY

[www.ontrackededucation.com/apply-now](http://www.ontrackededucation.com/apply-now)



---

## CONTACT US

Bedford I-Lab, Priory Business Park  
Bedford, MK44 3RZ | [recruitment@ontrackededucation.com](mailto:recruitment@ontrackededucation.com)